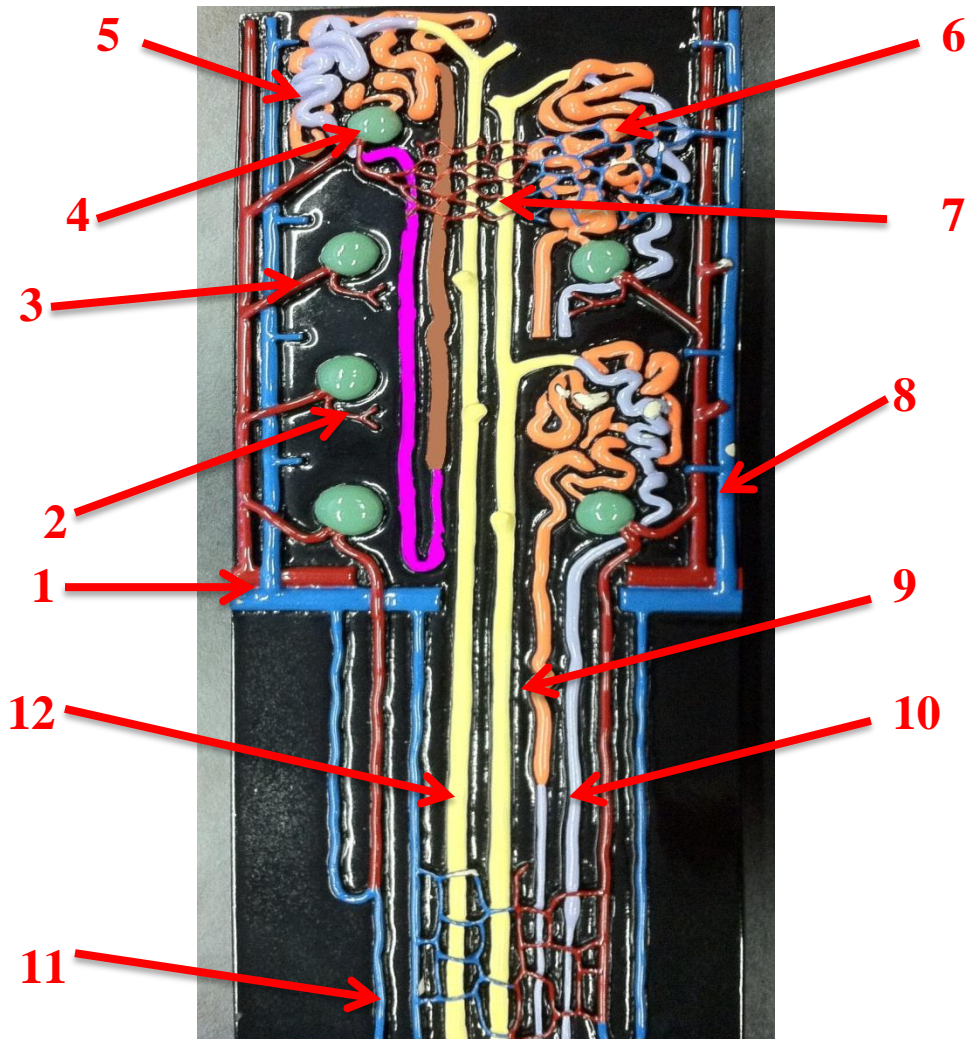


For the audio version of the file, click this link: [ID - Nephron Model Audio](#)

Colored Nephron Model KEY



1. Arcuate artery and vein
2. Efferent arteriole
3. Afferent arteriole
4. Renal corpuscle (Glomerulus + Renal capsule)
5. Distal convoluted tubule
6. Proximal convoluted tubule
7. Peritubular capillaries
8. Interlobular arteries and veins
9. Henle's loop descending limb
10. Henle's loop ascending limb
11. Vasa Recta
12. Collecting Duct